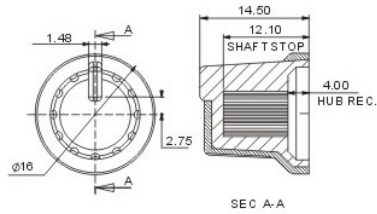
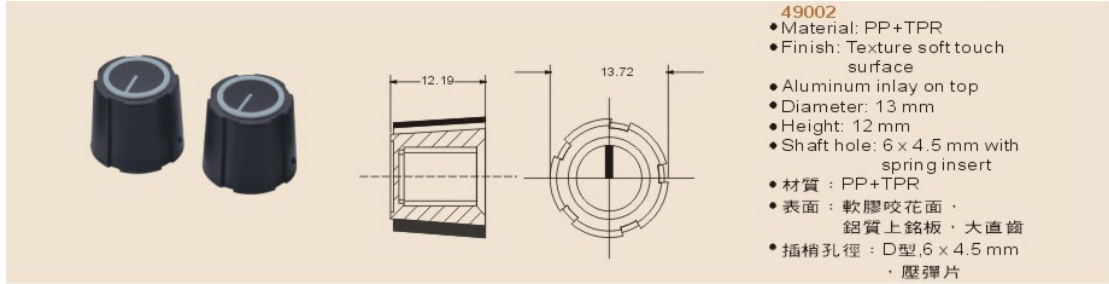


Two colour knobs 雙色旋鈕



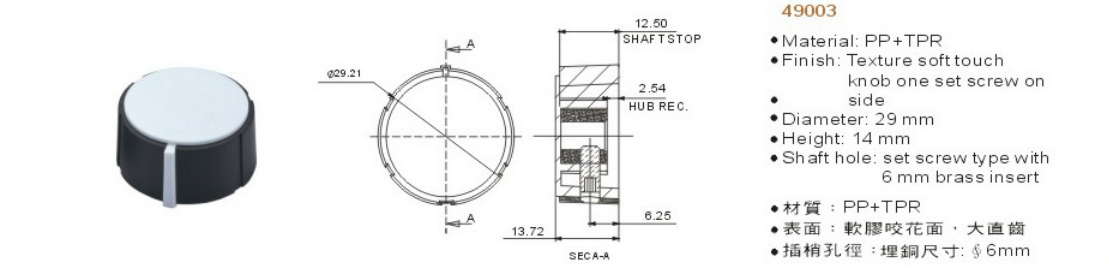
49001

- Material: PP+TPR
- Diameter: 16 mm
- Height: 14.8 mm
- With raise indicator line
- Shaft hole: D type, 6 x 4.5 mm or 6 mm x 18 teeth
- 材質：PP+TPR
- 表面：軟膠咬花·大直齒
- 突出指示線
- 插梢孔徑：D型 6 x 4.5 mm 或 6 mm x 18 齒



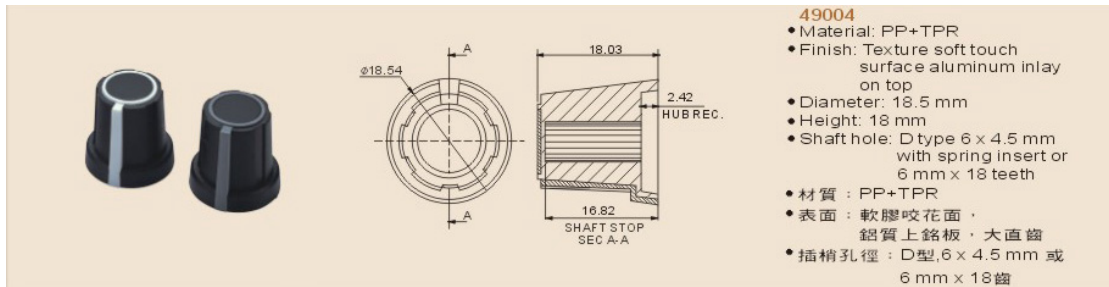
49002

- Material: PP+TPR
- Finish: Texture soft touch surface
- Aluminum inlay on top
- Diameter: 13 mm
- Height: 12 mm
- Shaft hole: 6 x 4.5 mm with spring insert
- 材質：PP+TPR
- 表面：軟膠咬花面·鋁質上銘板·大直齒
- 插梢孔徑：D型 6 x 4.5 mm · 壓彈片



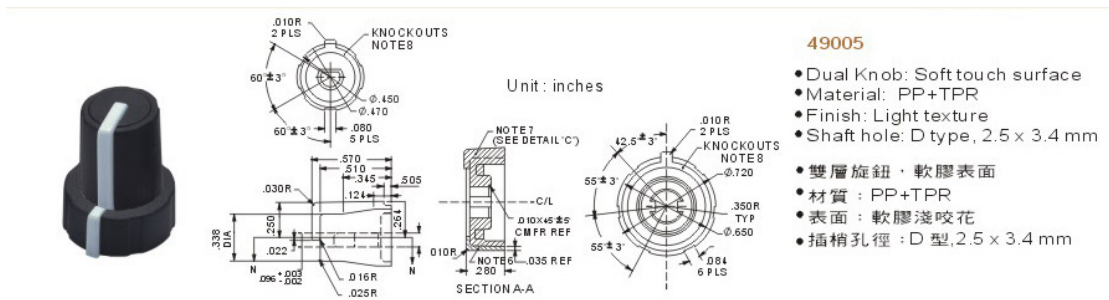
49003

- Material: PP+TPR
- Finish: Texture soft touch knob one set screw on side
- Diameter: 29 mm
- Height: 14 mm
- Shaft hole: set screw type with 6 mm brass insert
- 材質：PP+TPR
- 表面：軟膠咬花面·大直齒
- 插梢孔徑：埋銅尺寸： $\phi 6$ mm



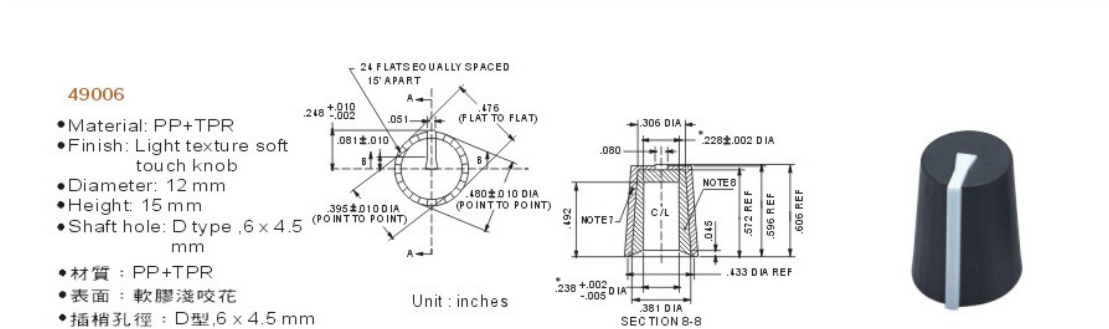
49004

- Material: PP+TPR
- Finish: Texture soft touch surface aluminum inlay on top
- Diameter: 18.5 mm
- Height: 18 mm
- Shaft hole: D type 6 x 4.5 mm with spring insert or 6 mm x 18 teeth
- 材質：PP+TPR
- 表面：軟膠咬花面·鋁質上銘板·大直齒
- 插梢孔徑：D型 6 x 4.5 mm 或 6 mm x 18 齒



49005

- Dual Knob: Soft touch surface
- Material: PP+TPR
- Finish: Light texture
- Shaft hole: D type, 2.5 x 3.4 mm
- 雙層旋鈕，軟膠表面
- 材質：PP+TPR
- 表面：軟膠淺咬花
- 插梢孔徑：D型 2.5 x 3.4 mm



49006

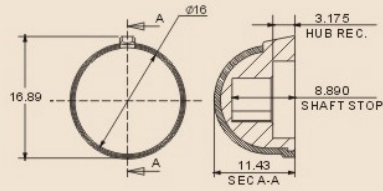
- Material: PP+TPR
- Finish: Light texture soft touch knob
- Diameter: 12 mm
- Height: 15 mm
- Shaft hole: D type, 6 x 4.5 mm
- 材質：PP+TPR
- 表面：軟膠淺咬花
- 插梢孔徑：D型 6 x 4.5 mm

Two colour knobs 雙色旋鈕

49007

- Material: PP+TPR
- Finish: Light texture soft touch knob
- Diameter: 16 mm
- Height: 11 mm
- Shaft hole: D type ,6 × 4.5 mm

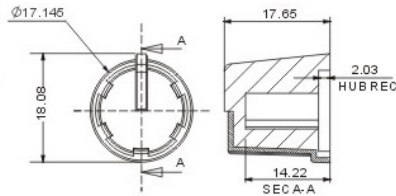
- 材質：PP+TPR
- 表面：軟膠淺咬花
- 插梢孔徑：D型,6 × 4.5mm



49008

- Material: PP+TPR
- Finish: Texture soft touch surface
- Diameter: 17.1mm
- Height: 17.5 mm
- Shaft hole: D type ,6 × 4.5 mm or 6 mm × 18 teeth

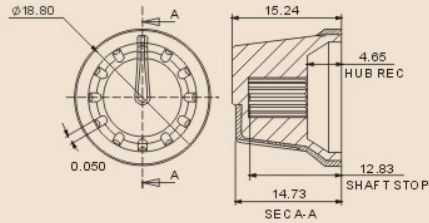
- 材質：PP+TPR
- 表面：軟膠淺咬花，大直齒
- 插孔徑：D型,6 × 4.5 mm 或 6 mm × 18齒



49009

- Material: PP+TPR
- Finish: Light texture soft touch knob
- Diameter: 18.8 mm
- Height: 15.4 mm
- Shaft hole: 6 mm × 18 teeth

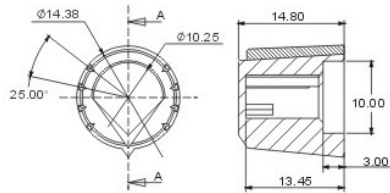
- 材質：PP+TPR
- 表面：軟膠咬花面，大直齒
- 插梢孔徑：6 mm × 18 齒



49010

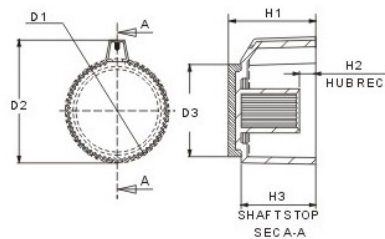
- Material: PP+TPR
- Finish: Light texture soft touch knob
- Diameter: 14.4 mm
- Height: 14.8 mm
- Shaft hole: D type 6 × 4.5 mm or 6 mm × 18 teeth

- 材質：PP+TPR
- 表面：軟膠咬花面，大直齒
- 插梢孔徑：D型,6 × 4.5 mm 或 6 mm × 18 齒



49011-2

49011-1



49011

- Material: ABS+ABS
- Finish: Light texture
- Shaft hole: 6mm × 18 teeth

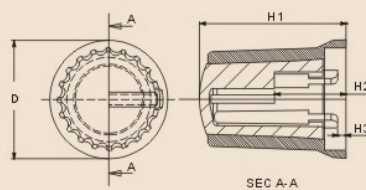
- 材質：ABS+ABS
- 表面：淺咬花，直齒
- 插梢孔徑：6 mm × 18 齒

PART NO.	D1	D2	D3	H1	H2	H3
49011-1	19.5	23	16.7	16.2	3	13.8
49011-2	25.4	29.1	21.5	16.4	3.2	14



49012-2

49012-1



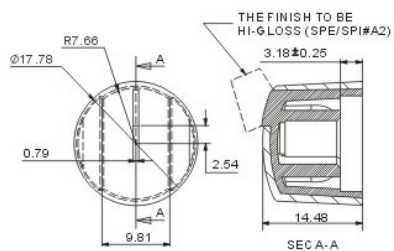
49012

- Material: ABS+ABS
- Finish: Light texture
- Shaft hole: D type ,6 × 4.5mm

- 材質：ABS+ABS
- 表面：淺咬花，直齒
- 插梢孔徑：D型,6 × 4.5mm

PART NO.	D	H1	H2	H3
49012-1	14	17.5	8.5	1
49012-2	18	17.65	8.5	1

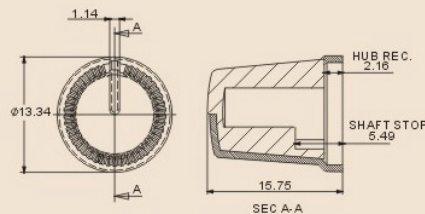
Two colour knobs 雙色旋鈕



49013

- Material: PP+TPR
- Finish: Light texture
- Shaft hole: D type, 6 x 4.5 mm

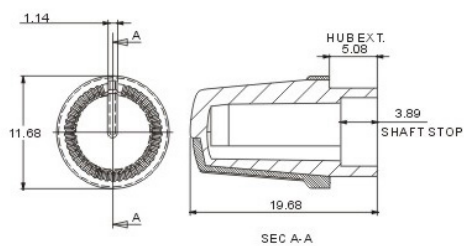
- 材質：PP+TPR
- 表面：軟膠咬花面
- 插梢孔徑：D型, 6 x 4.5 mm



49014

- Material: ABS+ABS
- Finish: Light texture
- Shaft hole: D type, 6 x 4.5 mm

- 材質：ABS+ABS
- 表面：淺咬花，直齒
- 插梢孔徑：D型, 6 x 4.5 mm



49015

- Material: ABS+ABS
- Finish: Light texture
- Shaft hole: D type, 6 x 4.5 mm

- 材質：ABS+ABS
- 表面：淺咬花，直齒
- 插梢孔徑：D型, 6 x 4.5 mm